



Your Liver. Your Life.

VOICES

OF LIVER DISEASE



American Liver Foundation | Annual Report 2015



It is my pleasure to welcome you to the American Liver Foundation's 2015 annual report. This small volume documents a year of progress in challenging liver disease's position as one of the top 12 leading causes of death for Americans ages 25 to 64. This past year, we raised our voices every day.

In 2015, the American Liver Foundation launched our federal Advocacy Day in Washington, DC, a new annual initiative that will give us a greater voice on Capitol Hill. On behalf of 30 million Americans living with liver disease, our staff joined by members of our National Patient Advisory Committee (NPAC) made the case for increased allocations for liver research and a more pro-active public health response for testing and treatment for liver disease.

Our media-trained and well-informed NPAC members are at the heart of the Foundation's awareness raising activities. By courageously and generously sharing their stories, these men and women put a human face on liver disease, and give voice to the needs and concerns of liver patients everywhere.

Until very recently, the liver was rarely featured in the news outside of celebrity illnesses related to liver failure or hepatitis C. This is changing and for the better, and ALF's persistence and presence has played an important role in this transition. In 2015, rarely did a week go by without a mention of liver wellness or liver disease in the mainstream media as our aggressive communications strategy leveraged media opportunities like Veterans Day, Liver Awareness Month and local events to drive coverage.

We have shown that with the Foundation behind them, individuals navigating the rocky road of liver disease diagnosis and families learning how to care for their relatives become their own best advocates. We're providing information and services that build a broad support network. In addition to our national Helpline and extensive library of free print material, in 2015, ALF's digital impact expanded significantly. Our website activity surged to over 2 million visits. Nearly 100,000 people became followers of ALF's Facebook page and tens of thousands more are now following us via Twitter and on platforms like Instagram.

Our impact in the area of treatment and advocacy efforts to find a cure for liver disease continues to grow. The American Liver Foundation's research grant program galvanizes the medical community by funding scientific advancement, and our regional divisions bring local doctors and medical professionals together to share best treatment practices. More needs to be done. There is no doubt that liver disease research is underfunded in proportion to its medical impact on the American public, and we will continue to promote research and advocacy for greater funding.

This vitally important work could not be accomplished without the exciting events that ALF sponsors across the country that fund our mission, such as our signature event, the unique culinary experience, Flavors, and the Liver Life Walk. These fundraising events are also powerful awareness activities that engage the attention of millions.

In the pages that follow, you will meet some of the exceptional people who are part of our cause, bringing their energy, knowledge, resources, fresh thinking and commitment to our common purpose. They are the voices of liver disease, and like you, they are bringing us closer to a world free of liver disease.

A handwritten signature in black ink that reads "Thomas F. Nealon III".

Thomas F. Nealon III
National Board Chair and Chief Executive Officer



About the American Liver Foundation

Founded in 1976, the American Liver Foundation (ALF) is the nation's largest patient advocacy organization for people living with liver disease. ALF reaches more than 2 million people each year with health information, education and support services via its national office, 16 regional U.S. divisions and an active online presence. Recognized as a trusted voice for liver disease patients, ALF also operates a national toll-free helpline, educates patients, policy makers and the public, and provides grants to early-career researchers to help find a cure for all liver diseases.

Board of Directors

Thomas F. Nealon III
 A. Hamilton Baiden IV
 Jodi R. Bohr
 Mike Braunstein
 Robert Brickman
 Eugene (Gene) Cautillo
 Nicholas J. DeRoma
 Allan J. Doerr

T. Clark Gamblin, MD, MS
 Dennis Gleason
 Michael Kerr
 Robert Leventhal, MD, FACP, AGAF
 Rohit Loomba, MD, MH Sc
 Bob Merowitz
 Martin (Marty) Mullen
 Tina Sandoval

Susan Sherman Stone, CPA, MST
 Guy Thomas
 Hillel Tobias, MD, PhD
 Daniel E. Weil

Honorary Board Member
 Thomas E. Starzl, MD, PhD

“It has been a privilege to tell my story of overcoming liver disease on Capitol Hill. Let us all raise our voices and inspire others to action.”

Robert Brickman



Jim Goldberg

Founder, Give a Chip Campaign

When I started my company, Deep River Snacks, I had two goals: make a living to support my family, and find a way to contribute to my community. Giving back has always been part of our ethos, and we started to put messaging about nonprofit causes that were important to our employees on our packages about 10 years ago.

But in 2010, when my son Meyer was 6, we found out that our little guy was seriously ill. He had been having nosebleeds, a tender tummy and other symptoms. For months, we kept taking him to doctors for a whole battery of tests. I was in an airport about to fly home when my wife called and told me the diagnosis. Meyer had an autoimmune liver disease.

I had no understanding of liver disease. I had no clue what it meant, and some days I feel like it's still sinking in. Slowly, I educated myself on it, with a lot of support from ALF.

And I realized it was time to get serious about what I could do personally to tell the story of liver disease, raise funds and figure out how to save our kid.

The Give a Chip Campaign is our way of educating the public about liver disease while providing a way for folks to support research.



So we started the Give A Chip Campaign to donate a portion of our sales to ALF and to reach more people with information about liver disease.

Some people just get a bad hand in life, and as a human being you need to be there to help out. You have to 'give a chip.' I love it when I get emails from people all over the country who read our packaging and reach out. Some are facing the same medical challenge. Recently, I heard from a father whose son has the same disease as Meyer. This man's other son was able to be a liver transplant donor. It was incredibly moving.

Meyer just loves dragons, so he has his own ALF Walk team called Meyer's Dragons. They turn out every year to help raise money. Friends, family, colleagues, neighbors. They all walk.

It makes such a difference to know that you are not alone, so we do all we can to work with ALF to raise our voices and be there for others. At the end of the day, you have to try to give more than you get.



Chef Mel (middle), Arizona Chef of the Year, has been a part of Flavors of Phoenix for 12 years.

Meliton “Mel” Mecinas

Flavors of Phoenix Chef

I have made my home in Arizona for almost 20 years, and I believe that we all need to contribute to the health of our community. That is why I am so honored each year to be part of the annual Flavors event to raise money for the American Liver Foundation. If my skills as a chef can help attract people to this cause, then I say count me in!

Liver disease is a silent killer in the Hispanic community especially, so we all need to work together to bring attention to this and contribute the resources that will make better treatments available. Just recently a chef who is a dear friend of mine was cured of Hep C, and it makes me so happy to know that my participation in Flavors all these years may have helped make a difference in his health.

I don't raise my voice, but I raise my spatula at Flavors of Phoenix to help defeat liver disease.



FLAVORS

A CULINARY EXPERIENCE

The concept for Flavors, the American Liver Foundation's signature fundraising event, was developed in Phoenix 25 years ago and continues to thrive there as part of the region's fabulous culinary scene. In 2015, 36 leading chefs were invited to participate in Flavors of Phoenix and the event attracted more than 425 guests to experience a memorable evening of gourmet dining. Flavors events, which often include an inspiring speaker who is facing the challenges of liver disease, are hosted by ALF in 22 cities and raised nearly \$3 million in 2015 to fund the research, education and advocacy efforts of the American Liver Foundation.





Stuart Connelly at Mt. Shasta.

The ALF Liver Life Challenge is a celebration of my commitment to a world free of liver disease.

Stuart Connelly

Liver Life Champion

Around the time of my 26th birthday in April 2015, I was diagnosed with primary sclerosing cholangitis (PSC). Not the kind of birthday gift I had in mind.

PSC is a little known autoimmune disease that affects the bile ducts both outside and inside the liver. It causes scar tissue to build up and prevents the liver from functioning properly. Currently, there is no cure and no treatment. PSC patients usually face liver disease and transplant issues within a 10-year time frame from diagnosis.

Nothing prepares anyone for this. After a few trips to the ER, which led to a great gastroenterologist, I found a fantastic hepatologist who is involved directly in PSC research.

Then I joined the San Francisco Bay Area division of the American Liver Foundation, and within weeks of my diagnosis, I signed up to climb Mt. Shasta, the second largest volcano in America.

When I started, I was weeks behind the other climbers in doing practice hikes, physical training and recruiting donors to sponsor my ALF Liver Life Climb. But that didn't stop me. I reconnected with my inner Boy Scout and trained in the short time I had to be able to handle a two-day climb carrying a 40-pound pack.

The many lessons I have learned throughout life have taught me to think clearly, stay positive and take action when faced with adversity. For me, part

of that action has been raising my voice by being part of the ALF Liver Life Climb.

I know my efforts increased PSC awareness and provided research funds for the American Liver Foundation. I am proud to serve as the Liver Life Champion for the 2016 climb team so that together we can move forward toward our goal of a world without liver disease. I will continue to work with ALF for this cause so that others like myself will hopefully have a treatment and a cure someday soon.



The Liver Life Challenge brings together teams from across the country each year to participate in endurance events. By engaging friends and families in the cause, these committed athletes climb mountains and run marathons to raise millions of dollars that enable ALF to support liver disease research and promote programs.

Alonzo Younger

Liver Life Walker

In mid 2014, I discovered I had liver disease. By January 2015, my liver had deteriorated to the point where I was put on the transplant waiting list, and my health continued to decline. By the grace of God, on the morning of May 16th, I was given a liver from a young donor who had unfortunately lost his life. Through the generosity and awareness of his family, my life was spared.

Each day that passes for me now is an incredible blessing, and if there is anything that I can do to help someone else have a future without liver disease, then sign me up! So now I'm not only walking, but running and talking to people about the seriousness of liver disease, the need for organ donation and the lack of information in the general public about this issue because many, many lives can be saved with increased awareness.



More than a walk, the LIVER LIFE WALK unites communities in the fight against liver disease. In 2015, 1,149 walk teams took to the streets and trails coast-to-coast to bring much needed awareness to the needs of millions of Americans who are battling more than 100 different types of liver disease. Their energy and enthusiasm raised crucial funds for life-saving research, education, support and advocacy.



I'm raising my voice to help my peers learn healthy liver habits at a time when they are making many lifestyle choices.

Linda Siam, ALF intern and Teens to Twenties curriculum presenter at Temple University

Ivory Allison

Teens to Twenties Outreach Curriculum
Executive Director of the ALF Mid-Atlantic Division

When I joined ALF's Mid-Atlantic Division, it was to help manage their big events like the Liver Life Walk. Event management was my background, and to be honest, I didn't know that much about liver disease. Working with ALF has been an incredible eye-opener. I have learned so much and really came to realize how much work we have to continue to do to raise awareness.

ALF has strong outreach and education programs targeting school-age children, as well as adults, but I saw an opportunity to reach out to high school and college-age kids. The Teens to Twenties outreach curriculum that we put together builds on ALF's current programs and emphasizes prevention.

Tattoos and piercing are a fashion craze. You can't blame a teen for wanting to look cool, but many young people have absolutely no idea that they could be infected with Hep C from dirty ink at the tattoo studio.

Acetaminophen is often the go-to over-the-counter medication for symptoms of a bad cold

or flu. And also the most commonly misused OTC drug. As young people start to take charge of their own health, they need to be aware of the dangers of easy mistakes, like taking too large a dose or simultaneously using more than one medication that contains acetaminophen.

Binge drinking is a serious problem on college campuses. In addition to the immediate risks from partying too hard, excess alcohol consumption can have long-term health consequences that college students might not be thinking about. And drinking is often part of the equation that can lead to infection with sexually-transmitted diseases like hepatitis B. The Teens to Twenties curriculum explains the impact of alcohol and Hep B on the liver as well as prevention tactics like Hep B vaccination.

Young people need solid information to make the right choices, and I am so proud that this new curriculum is now in use across the country.

Carolyn Evans

PBC Patient & Volunteer Counselor

I have lived with primary biliary cholangitis (PBC) since 1992 when I was 32. I was a young mother. I had two kids, my dad had recently died, and I had a bad cold that would just not clear up. I was so exhausted. Ultimately I was diagnosed with PBC. In 2006, I received a living donor transplant and have just celebrated my 10th year post transplant!

I feel that I have learned a lot that can help others, especially the newly diagnosed and their family members. ALF provides so much support to people living with liver disease and valuable forums for patient education, so I have been an active volunteer with ALF for over two years. In January, as part of its series of patient education webinars, I joined Dr. Cynthia Levy, a nationally-known hepatologist, to give people an opportunity online to ask the medical and personal questions that are keeping them awake at night. It was amazing. Hundreds of people logged on to hear what I had to say, and it was my honor to share my experiences with them.

Through ALF, I also meet with other PBC patients one-on-one to talk about living with the disease. For example, when I was first diagnosed, I was told that I would not be able to have another child. I didn't feel my family was complete yet, and I didn't want to accept that. I was able to find doctors who could guide me to a healthy pregnancy, and today I have a wonderful son who has been healthy for more than 21 years. So when I met with a woman who had been diagnosed with PBC and had also been told she would never be able to have children – I was able to give her renewed hope. I shared ALF resources about managing PBC, treatment protocols and child bearing information and encouraged her to explore the options for pregnancy with her doctor.

With education and support, PBC patients can have a full life. I tell people, don't live in the past and don't fear the future. Take your life one day at a time and enjoy every minute of it.

My goal is to give others living with PBC practical and supportive advice about how to prevent the disease from limiting their lives.





Philip Scarfo

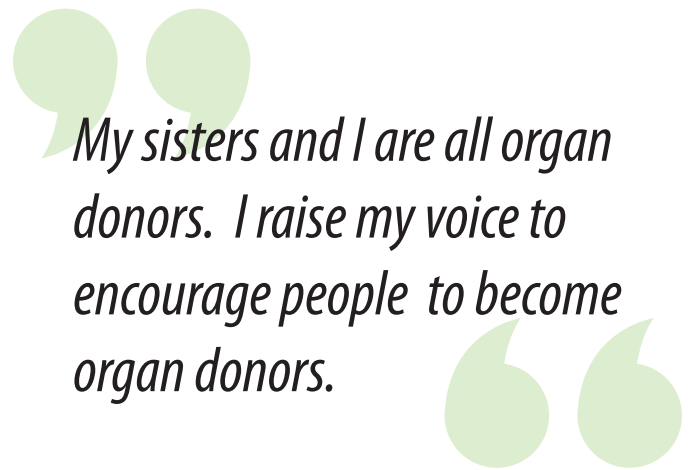
ALF National Director
of Education & Training

Working for ALF these past 10 years has been a mission for me. I had nonalcoholic steatohepatitis (NASH) which causes liver damage. I've had a transplant, and every time I am able to offer someone hope, I feel so good.

A lot of my day consists of taking calls on the ALF HELPLINE and training new employees and volunteers who we send out to represent ALF and provide patient education. I can give them a very personal perspective.

Weight has been a problem for me my whole life. As a teen I was diagnosed with Type 1, juvenile diabetes. By 21, I was well on my way to major medical problems. The terminology for NASH, nonalcoholic fatty liver disease, wasn't really in use when I was diagnosed at 25 with liver disease almost 40 years ago. Now NASH has become so prevalent.

I waited 5 years for a liver transplant, and finally had the surgery 15 years ago when I was in my early



My sisters and I are all organ donors. I raise my voice to encourage people to become organ donors.

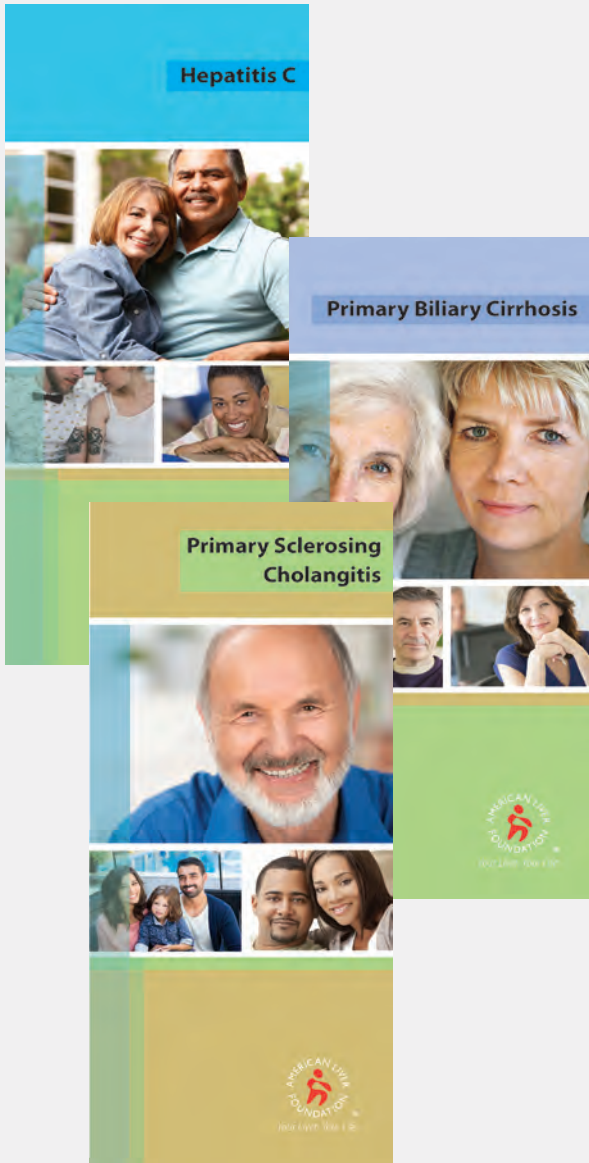
Juli Scarfo, Phil Scarfo's daughter

fifties. Recovery after the transplant wasn't easy, but it was worth the struggle, and I consider myself lucky. Without it, I would not have been here to see my three daughters grow up and graduate from college.

So many people who call in every single day need practical and educational information. The team who answer the HELPLINE are not clinicians, but we help people to understand better what their doctor is telling them, give them helpful resources and help them get into a better state of mind.

We refer people to the informative educational materials that ALF has produced, and we talk to them about how they can be proactive about adjusting their lifestyle to live a healthy life.

All my daughters have genetic factors that could lead to NASH, and like me, my daughter Juli has always had weight issues. I am so proud of the steps she has taken to radically change her lifestyle to manage her diet and exercise. She is an inspiration.



Education and Support Services

The American Liver Foundation provides education and support services at the national level and at the local level through our active divisions across the country. The programs are tailored for people of all ages, whether they are living with liver disease or are at-risk.

For individuals who have liver disease or a family member who is struggling with these medical challenges, ALF reaches out with support and information through webinars, web-based educational materials and online support groups. The national Helpline, 1-800-GO-LIVER, is a heavily used one-on-one resource and offers real-time interpretation services in 20 languages.

ALF's educational curriculums for local use include the Liver Wellness program, which is presented in community settings such as libraries, hospitals, civic organizations, as well as corporate employee wellness sessions, and Love Your Liver, an age-appropriate program for elementary, middle school and high school students that focuses on liver health, risk factors and prevention. The new Teens to Twenties curriculum addresses maturing young adults.

To support these programs, ALF produces widely-distributed educational materials on 31 liver topics that are available to the public at no cost and have been translated into Spanish, Chinese and Russian.



National Helpline



1-800-GO-LIVER
(1-800-465-4837)



THERE IS
A CURE

If a person has reason to believe they have Hep C, there should be funding available to pay for testing. We have to raise our voices to make that policy.

Bob Rice

Veteran, Counselor and Advocate

Frankly, I don't know how I got Hep C. I'm a veteran, and statistically we have high rates of Hep C. Maybe I got it during my service in the military. Maybe I got it from bad behavior when I was younger. I figure it doesn't matter how, it matters that I found out, got treated and got cured.

I consider myself a miracle. I had a liver transplant and then I had treatment so the Hep C virus wouldn't attack my new liver. Fortunately, my insurance company covered the cost of the medication. I've been very lucky and that's why I do what I do now. I head to Capitol Hill in DC for ALF Advocacy Day each year and speak up. We need to work together to remove the obstacles to testing and treatment.

There is a cure for Hep C now, but many health insurers are denying access to this new treatment because it is so costly. They require that the person be diagnosed with late stage cirrhosis before they will approve treatment coverage. I don't believe insurance companies should have the right to

deny access to the cure until the person gets sicker first. And it's not smart financially. The pills are very expensive, but the alternative is sky-high medical bills as your health deteriorates.

I work as a counselor at a halfway house for guys who had drug and alcohol addictions. I bring in people who do testing and education for the guys. I try to point them in the right direction. Of the 95 men in the group, 65% have Hep C that we know of. They should be getting treatment now so they don't expose other people to the virus.

There was one young man that we set up with a primary care doc who set him up with treatment. He went through the program, stayed clean, got treatment and was cured. That meant a lot to me. Everyone deserves the chance for treatment and a better life.



Your Liver. Your Life.

Working Together for Change

In addition to hosting an annual advocacy day on Capitol Hill and awareness days at the state level, the American Liver Foundation teams up with other national nonprofits advocating to increase research, treatment options and support for people with liver disease.

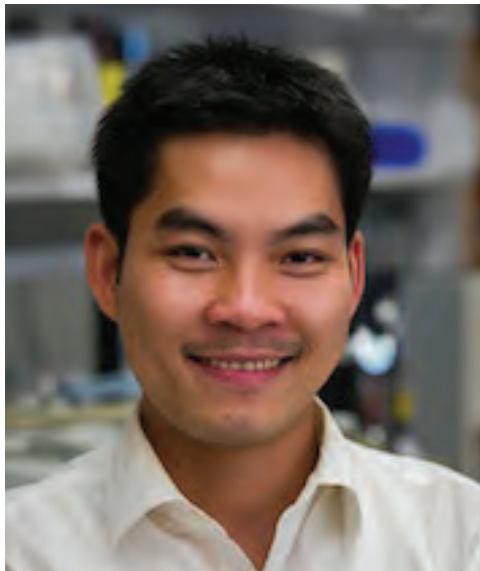
ALF also maintains a National Patient Advisory Committee, a group of media-trained advocates who have been impacted by liver disease (HCV, PBC, NASH, NAFLD, and more.). These committed volunteers are integral to our change efforts. They demonstrate that, by raising our voices together, we all have an even greater impact.



Congresswoman Elizabeth Esty

U.S. House of Representatives,
Connecticut 5th District

Because of new medications, for the first time, we have the opportunity to cure more than 90 percent of patients infected with hepatitis C and offer people a better quality of life while undergoing treatment. I'm standing with ALF to increase awareness and participation in organ donation. There needs to be a greater focus on awareness and public education campaigns that will improve knowledge about organ transplantation and make it easier for people to become donors.



Dr. Doan Dao

Recipient, ALF Postdoctoral Research Fellowship

I have worked in the area of hepatitis B virus (HBV) infection from basic research to clinical science and patient care as well as outreach/advocacy programs for more than 9 years. I have family members who are infected with Hep B, and liver disease is epidemic in my home country of Vietnam and highly prevalent in the Asian American community here. So this is personal for me.

But honestly, when I moved to the U.S. from Vietnam when I was 18, I had no idea about the dimensions of this public health crisis. When I decided to become a doctor, I took two years off from medical school to do research and became increasingly aware of the complexity of liver disease, as well as the unmet needs for treatment and support in America and in Southeast Asia.

As a scientist, I am extremely engaged by the complexity of the disease itself, and very grateful for the Fellowship support that I received from ALF to continue my research into Hep B. We need better ways to conduct animal research on mice, and I am part of a large group of scientists around the world who are tackling these barriers at the

genetic level, so that we can make faster progress in understanding the disease and developing treatment.

Part of the problem is that liver disease research is underfunded, given how many people suffer with it and how deadly it can be. Because the disease progresses more slowly than something like a heart attack, the threat of the disease doesn't seem as imminent. That is a mistaken perception that must be reversed.

Scientific progress is essential but so is building awareness and community. At the local level in Texas, at the national level here, and in my home country of Vietnam I am trying to bring people together to raise awareness and provide more of a medical and community infrastructure for disease education and support. I believe the liver disease community needs to be increasingly vocal to advocate for policy changes and funding. ALF is a tremendous inspiration, and I am committed to raise my voice with ALF.

Funding Research to Change the Future

Research is integral to the work of the American Liver Foundation and is essential to finding new ways to prevent, treat and cure liver disease. Supporting early-career scientists is critical to this effort. In fiscal year 2015, ALF provided \$275,000.

Liver Scholar Award

Debanjan Dhar, PhD

University of California, San Diego
The Mechanistic Role of CD44 in the Initiation and Progression of Fibrosis and HCC
Mentor: Michael Karin, PhD

Postdoctoral Research Awards Fellowships

Silvia Affò, PhD

John M. Vierling, MD Postdoctoral Research Fellowship
Columbia University
Fate tracing of portal fibroblasts in biliary fibrosis and cholangiocarcinoma
Mentor: Robert F. Schwabe, MD

Soumik BasuRay, PhD

Alexander M. White, III Memorial Postdoctoral Research Fellowship
University of Texas Southwestern Medical Center
Role of PNPLA3 in Fatty Liver Disease
Mentor: Helen H. Hobbs, MD

Maude Boisvert, PhD

Hepatitis Fund for the Cure Postdoctoral Research Fellowship
Centre de Recherche du Centre Hospitalier de l'Université de Montréal
Dynamics of CD4 T Cell Responses/Viral Evolution During Multiple Episodes of HCV Infection
Mentor: Naglaa H. Shoukry, PhD

Petra Hirsova, PhD

Roger L. Jenkins, MD Postdoctoral Research Fellowship
Mayo Clinic
Role of Extracellular Vesicles in Pathogenesis of Nonalcoholic Steatohepatitis
Mentor: Gregory J. Gores, MD

Yue Li, PhD

Irwin M. Arias, MD Postdoctoral Research Fellowship
Brigham and Women's Hospital
Tissue-Specific Subcellular Localization of Thioesterase Superfamily Member 1 in the Pathogenesis of Non-Alcoholic Fatty Liver Disease
Mentor: David E. Cohen, MD, PhD

Macarena A. Lolas, MD, PhD

American Society of Transplantation Postdoctoral Research Fellowship
University of California, San Francisco
The Role of 3D Cellular Interactions in Promoting Functional Hepatic Organoid Formation from Human Induced Pluripotent Stem Cells
Mentor: Tammy T. Chang, MD, PhD

Jessica L. Maiers, PhD

Hans Popper Memorial Postdoctoral Research Fellowship
Mayo Clinic
TANGO1 Regulates Collagen Secretion and Fibrogenesis
Mentor: Vijay H. Shah, MD

Ashley M. Mohr, PhD

Charles Trey, MD Memorial Postdoctoral Research Fellowship
University of Nebraska Medical Center
FGFR4: Regulation of miR-93 and Characterization of a Novel FGFR4 Fragment
Mentor: Justin L. Mott, MD, PhD

Alejandro Torres-Hernández, MD

Thomas F. Nealon, III Postdoctoral Research Fellowship Honoring Zachary Rue
New York University School of Medicine
GM-CSF Regulation of Liver Fibrosis
Mentor: George Miller, MD

Jun Xu, PhD

Herman Lopata Memorial Hepatitis Postdoctoral Research Fellowship
University of California, San Diego
The Roles of Fibrocytes During Hepatitis Induced Fibrogenesis
Mentor: Tatiana Kisseleva, MD, PhD



Michele Carver

National Patient Advisory Committee member
and media spokesperson

When I was diagnosed with hepatitis C in 2010, I thought how could this happen to me? I knew something was wrong when I was tired all the time. I usually run and I go to the gym, but all I wanted to do every day after work was come home and go to bed. Then when blood work revealed Hep C, I was shocked, afraid and embarrassed by the stigma of this disease.

I don't know how I contracted the virus, although I suspect a blood transfusion that I had years ago. My family was very supportive and encouraged me to find a really good doctor. He wanted to put me on medication but it cost \$1,000 a pill. No kidding. That was way out of reach for me, but I wanted

to live and see my kids grow up and get married. Fortunately, my doctor was able to include me in a research study that delivered the medication to my home. I had treatment for 24 months, and now I am 100% free of the virus.

I am proud to be a part of the ALF National Patient Advisory Committee so that I can raise my voice to speak out about the need to make this life-saving medication available to people with Hep C. I want to tell the world, you should get tested, don't be afraid, there is a cure.



Leveraging Media Reach

The American Liver Foundation has established itself as a resource for journalists covering a wide array of stories about liver disease—from health policy to drug development. This year media including the Washington Post, CNN, CBS News, ESPN, NPR, and Reuters have turned to the ALF to provide information and insights regarding liver health and liver disease.

We have taken positions and spoken out about issues key to the liver community and the patients we serve, such as equal access to hepatitis C medications for patients who rely on Medicaid and the need for greater parity in livers available for transplant nationwide.

ALF has also been proactive about using opportunities like

Liver Cancer Awareness Month and Veterans Day to line up interviews for our leadership, doctors and patient advocates, so their powerful voices can raise awareness through national and local media.

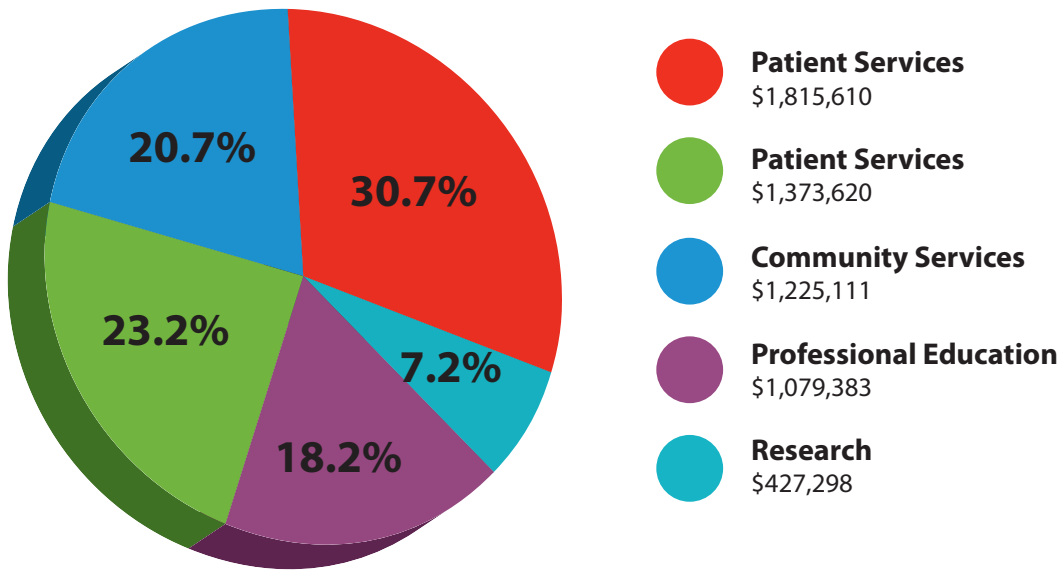
Raising our voice through media across the country, we reached almost 20 million viewers and listeners of local news on TV and radio stations like these:

- WCBC-AM Washington, DC
- WTMJ-TV Milwaukee
- KUSI-TV San Diego
- WOWK-TV Charleston
- KTVD Denver
- WINT-AM Cleveland
- KYMA-TV Yuma
- WOCA-AM Orlando
- WFSB-TV Hartford
- WYRQ-FM Minneapolis
- KASA-TV Albuquerque
- KRIV-TV Houston

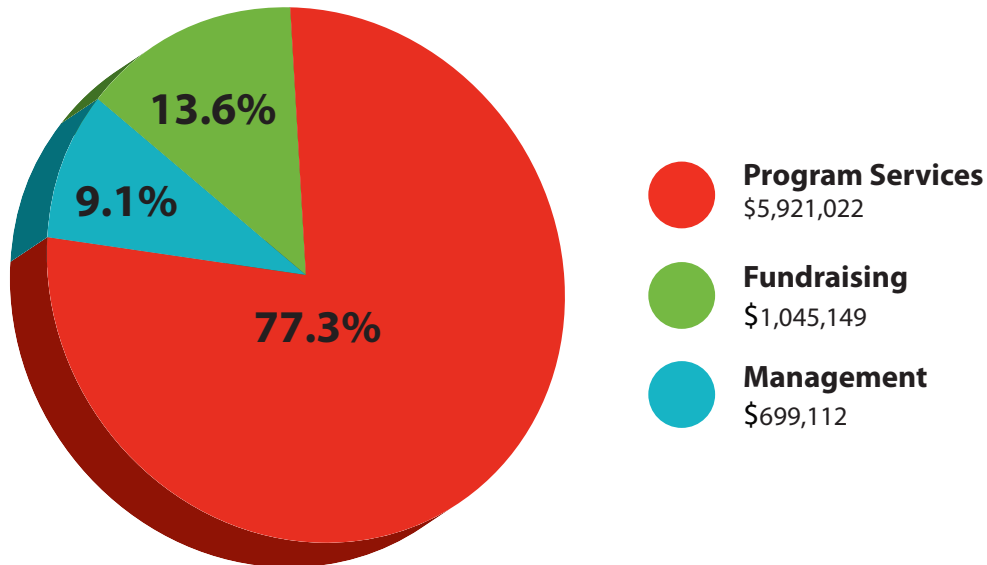
Where Your Money Goes

With your support, the American Liver Foundation can continue to educate the public about liver health and wellness, provide assistance to families and caregivers, and work to find better treatments and cures.

Program Services



Program Expenses



Please help us continue this vital work by giving to the American Liver Foundation at

LiverFoundation.org/Donate

Balance Sheet

Assets	2015	2014
Cash and Cash Equivalents	\$668,425	\$1,176,018
Investments	2,519,312	2,495,580
Contributions Receivable	593,227	244,684
Prepaid Expenses and Other Assets	242,936	234,567
Property and Equipment, Net	132,851	346,916
Total Assets	\$4,156,751	\$4,497,765
Liabilities and Net Assets		
Liabilities:		
Accrued Expenses	\$229,184	\$253,419
Payroll & Related liabilities	284,780	250,765
Funds Held on Behalf of Others	829,312	859,702
Awards and Grants Payable	206,250	150,000
Deferred Rent Payable	208,126	218,889
Loan Payable	-	553,295
Total Liabilities	1,757,652	2,286,070
Net Assets Surplus/(Deficit)		
Unrestricted	(283,235)	(142,748)
Temporarily Restricted	1,690,299	1,362,408
Permanently Restricted	992,035	992,035
Total Net Assets	2,399,099	2,211,695
Total Liabilities and Net Assets	\$4,156,751	\$4,497,765

Statement of Activities

Public Support & Revenues	2015	2014
Contributions	\$2,575,492	\$2,483,904
Investment Income, Net	13,750	158,246
Other	10,762	1,523
Gain on sale of property	183,049	-
Special Events, Net of Direct Expenses	5,069,634	5,579,833
Total Public Support & Revenues	7,852,687	8,223,506
Program Services		
Public Education	1,815,610	1,543,042
Research	427,298	315,018
Professional Education	1,079,383	934,718
Patient Services	1,373,620	1,303,987
Community Services	1,225,111	1,345,437
Total Program Services	5,921,022	5,442,202
Supporting Services		
Management & General	699,112	548,494
Fundraising	1,045,149	1,180,223
Total Support Services	1,744,261	1,728,717
Total Cost of Program & Supporting Services	7,665,283	7,170,919
Change in Net Assets	187,404	1,052,587
Net Assets, beginning of year	2,211,695	1,159,108
Net Assets, end of year	\$2,399,099	\$2,211,695

National Medical Advisory Committee

Co-Chairs

Nancy Reau, MD
Rush University Medical Center

Hillel Tobias, MD, PhD
NYU Langone Medical Center

Members

Ghassan Abou-Alfa, MD
Memorial Sloan-Kettering Cancer Center

Talal Adhami, MD
Cleveland Clinic

Jasmohan Bajaj, MD
Virginia Commonwealth University School of Medicine

Christopher Bowlus, MD
UC Davis Health System

Douglas Dieterich, MD
Mount Sinai Hospital

Joshua Friedman, MD
The Children's Hospital of Philadelphia,
University of Pennsylvania

John Goff, MD
University of Colorado School of Medicine

Robert W. Herring, MD
The University of Tennessee – Methodist

F. Blaine Hollinger, MD
Baylor College of Medicine

Kris Kowdley, MD
University of Washington in Seattle

Mauricio Lisker-Melman, MD
Washington University School of Medicine

Rohit Loomba, MD, MHS
University of California at San Diego

Andrew J. Muir, MD
Duke University Medical Center

John Polio, MD †
Connecticut Gastroenterology Associates, P.C.

Adnan Said, MD
University of Wisconsin School
of Medicine and Public Health

Rohit Satoskar, MD
Georgetown University Medical Center
Transplant Institute

Coleman Smith, MD
University of Minnesota Medical Center

Tamar Taddei, MD
Smilow Cancer Hospital

Hugo E. Vargas, MD
Mayo Clinic, Arizona

John M. Vierling, MD
Baylor College of Medicine

† deceased

Corporate Round Table

Gold Members

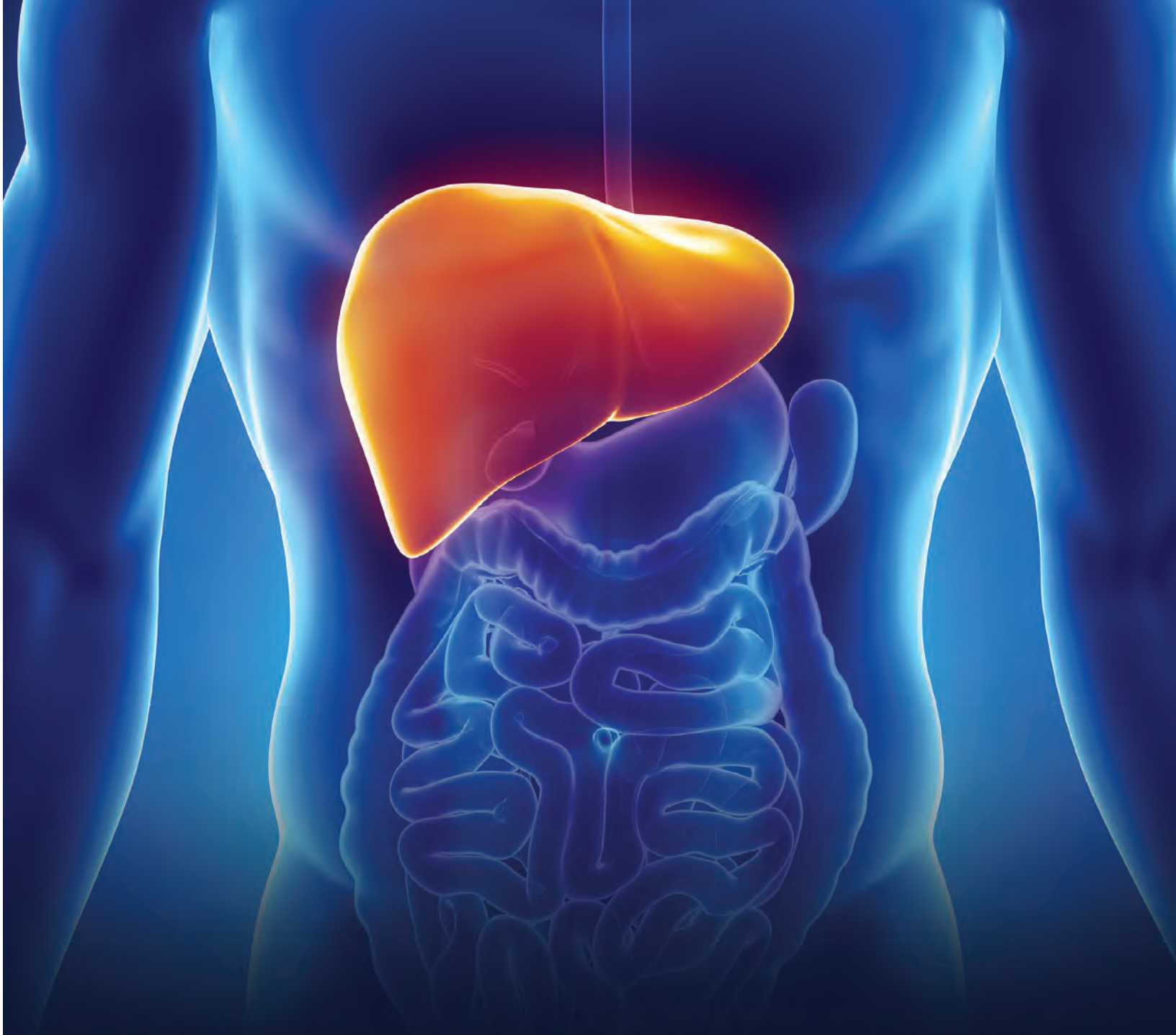
abbvie



Bronze Members

AcariaHealth
Alexion Pharmaceuticals
Avella Specialty Pharmacy
CVS Specialty
Intercept Pharmaceuticals

Merck
Sandhill Scientific
Vital Therapies
WCG, a W2O GROUP Company



600,000 PEOPLE A YEAR DIE FROM LIVER CANCER WORLDWIDE.

ARE YOU AT RISK?

Talk to your doctor if you have any of the following risk factors:

- Hepatitis B or Hepatitis C
- Fatty Liver (associated with Obesity and Diabetes)
- Excessive Alcohol Consumption
- Certain Metabolic Diseases

Learn more about these risk factors at www.liverfoundation.org/livercancer or call 1-800-GO-LIVER



ALF 2015 Supporters

\$100,000 and Above

AbbVie
Bayer Pharmaceuticals, Inc.
Estate of Jean Brooks Calvert
Community Health Charities
Gilead Sciences, Inc.
Michael and Susan Kerr

\$50,000 - \$99,999

Avella Specialty Pharmacy
CVS Speciality
Estate of Jane Ellen Dempster
Janssen Pharmaceutical Companies
of Johnson and Johnson
Anonymous Donor (1)

\$25,000 - \$49,999

AcariaHealth Pharmacy, Inc.
Banner University Medical Center -
Tucson
Blacktie LLC
Bristol-Myers Squibb Company
Catamaran
Genentech Pharmaceuticals
Gipson Family Foundation
Hartford Healthcare
Kohl's Department Stores, Inc.
Mayo Clinic of Arizona
Merck & Co., Inc.
Tom and Marjie Nealon
Robert and Gina Pollichino
Salix Pharmaceuticals, Inc.
The John J. McDonnell Margaret T.
O'Brien Foundation
The University of Chicago
Walgreens Specialty Pharmacy
Anonymous Donor (1)

\$10,000 - \$24,999

Advanced Health Media -
Bristol-Myers Squibb
Allcare Plus Pharmacy, Inc.

Amida Care Inc.
Arizona Transplant Associates, PC
Aureus Health Services
Dr. and Mrs. Richard Averitte, Jr.
BioPlus Specialty Pharmacy
Services, Inc.
Connecticut GI, PC
D'Amato & Lynch, LLP
Denver Region Toyota Dealers
Advertising Group
Dignity Health, St. Joseph's Hospital
and Medical Center
Duke School of Medicine
FreedomSmoke USA
Galmed Pharmaceuticals
Giant Eagle, Inc.
GNYHA Ventures, Inc.
Grandstand Sports and
Memorabilia, Inc.
Samuel A. and Jill A. Hamacher
Herrick, Feinstein LLP
Houston Methodist J. C. Walter
Transplant Center
Catherine Hyndman
Intercept Pharmaceuticals, Inc.
Ironshore
Jackson Health System
Jefferson University Hospitals
JMP Securities LLC
John Paul's Automotive
Kaufman Dolowich & Voluck LLP
KPMG, LLP
Lewis Brisbois Bisgaard & Smith LLP
Loma Linda University
Health Services
Mayo Foundation for Medical
Education and Research
Medical College of Wisconsin
Minnesota Gastroenterology, PA
Mark Mullen
Nicole Ellis Foundation Inc.
Northwestern University
One Legacy
Onyx Pharmaceuticals, Inc.
Pharmaceutical Research and
Manufacturers of America

Derrick Polder
Prime Aid Pharmacy Corp.
Quality Medical Research PLLC
Lindsey Scarpitti
Walter and Joyce Senney
Sharp Corporation
Stanford Hospital and Clinics
Synageva BioPharma Corporation
Texas Children's Hospital
The Brownell Firm
The Lee and Aidan McMahon
Foundation, Inc.
The Liver Institute at Methodist Dallas
The Tianaderrah Foundation
Estate of Adam Tigelman
Total Life Care RX Pharmacy, LLC
Travel Insured International, Inc.
United Way
University of California, San Diego
Valeant Pharmaceuticals Inc.
Vital Therapies
White and Williams LLP
Wilson, Elser, Moskowitz, Edelman &
Dicker LLP
Winget, Spadafora &
Schwartzberg, LLP
Yale-New Haven Hospital
Rick, Susan and Valerie Zehetner
Anonymous Donors (2)

\$5,000 - \$9,999

Akin, Gump, Strauss,
Hauer & Feld, LLP
Ameren Missouri
American Cancer Society
Larry Bain
Barona Band of Mission Indians
Bay Sheet Metal, Inc.
Christopher J. and
Katherine A. Berman
BioCure Speciality Pharmacy LLC
BJC HealthCare
Bloomberg L.P.
Victoria T. Bowman
Michael Braunstein

Justin G. and Ann J. Bullion
Burman's Specialty Pharmacy, LLC
Mark Caffray
Robert Curt Calamari
Capital Group Company
Charitable Foundation
William A. and Sonya T. Carpenter
Cedars-Sinai Medical Center
Centene Management Company LLC
CHI St. Luke's Health
Chicago Wolves Charities
Cleveland Clinic
Combined Health Agencies
Communities Foundation of Texas
Conatus Pharmaceuticals Inc.
Cooley LLP
Lloyd R. and Susie Cunningham
Mr. and Mrs. Nicholas DeRoma
Warren DeSouza
Diplomat Speciality Pharmacy
Allan J. Doerr

*I tell those battling liver
disease to never be afraid
to raise their voices.*

Allan Doerr, ALF Board Member and
parent of a child with liver disease

Sean Donnelly
Donor Network of Arizona
E. W. Howell Co., LLC
Ebert Charitable Foundation
Eli Lilly and Company
EMC Corporation
Ernest & Young
Barry Esene
Express Scripts, Inc.
Fairview Pharmacy
Fattman Productions
Fox Family Foundation
Gastroenterology Center of
Connecticut, PC
David G. George
Marjorie W. Gilbert
Pedro Gimena, Jr.

Andrew Michael Goldsweig
Good Health, Inc.
Melissa Gousse
Greater Houston Community
Foundation
Greenberg Traurig
Carolyn A. and Mark E. Hamlin
Tarek Ishmail Hassanein, MD
David Imagawa, MD
International Business
Machines Corporation
George and Kristyn Jamieson
Jefferson Memorial Community
Foundation
Jordan Porco Foundation
Joseph A. and Laura L. Klunk
Family Foundation
K & K RX Services LP
Kerry Kenny
Key Energy Services, Inc.
Nina Kjellson
Ladish Co. Foundation
Leckie & Associates Plumbing, Inc.
Mary T. and Patrick T. Leone
Robert Leventhal, MD, FACP, AGAF
Lissa Biesecker and Jeffrey K.
Longacre
Lucile Salter Packard
Children's Hospital
R. Laurence Macon
Patrice McMonagle
MedicoRx Specialty
Robert and Myrna Merowitz
Methodist Le Bonheur Healthcare
Mississippi Lime Company
Michelle Moeller
Adel Mohsen
David C. Mulligan, MD, FACS
Nemours
Neudesic
North Shore Gastroenterology, Inc.
Novartis Pharmaceuticals
Corporation
Scott V. Oakley
Marshall J. Orloff, MD
Penn University of Pennsylvania
Phoenix Children's Hospital
Gerald and Marie Pindus
Reeves-Sain Family of Medical

Services Inc.
Rocky Mountain Gastroenterology
Associates, PLLC
Rush University Medical Center
Sandhill Scientific, Inc.
Sangamo BioSciences, Inc.
Carsten Schroeder
Scripps
Silicon Valley Community Foundation
Southern California Liver Centers
Estate of Paul H. Stelmack
Judy and Winn Stephenson
Stifel Financial
The Children's Hospital of
Philadelphia
JoAnn Thompson and
Edward Zelonis
thunder::tech
Tobira Therapeutics
Truist
Tufts Medical Center
UCSD Medical Center
UCSF Medical Center
United Healthcare Services, Inc.
University Hospitals
University of California, Irvine
Valley of the Sun Pharmacy
Vanderbilt University
Washington University in St. Louis
Web Marketing Associates
Webster Bank
WCG
Winstead PC
World Wide Technology Foundation
Kelly M. Wrenn
Anonymous Donors (6)

\$2,500 - \$4,999

21st Century Super Fitness North
Aetna Foundation, Inc.
Albert Brothers, Inc.
Albert Einstein Medical Center
Kathy Allison
AMEC Americas Limited
Julie and Wayne Anderson
Anika Therapeutics
Irwin M. Arias, MD
Arthur J. Gallagher & Co.
Associates & Leisure Activities, LLC

Aurora Health Care
 Holly Ann Austin
 BAE Systems Matching Gifts Program
 Jeffrey D. and Mica Bane
 Bank of America Foundation, Inc.
 Karen and Tom Barbarie
 The Baskes Family
 Beth Battaglia
 Mustafa Behan
 Joseph A. and Donna J. Benedetto
 John Francis Bennett
 BJ and Melony Bergeron
 Berkshire Partners, LLC
 Kaylyn Marie Bernard
 BMO Harris Bank
 Boston Ballroom Corp.
 Boston Private Bank & Trust Company
 Dr. and Mrs. James L. Boyer
 Bravelets LLC
 Brookline Bank
 Lionel Brown, MD
 Michael E. Brown
 Deborah S. Burmeister
 Michael Butensky, MD
 Richard Byrne
 Capital Group
 Karen Carter
 Casino Arizona Talking Stick Resort
 Casino Del Sol Resort &
 Conference Center
 Everett R. Castle, Jr., MD
 Centura Health
 Sara Cerza
 Charter Care Health Partners
 The Children's Hospital Colorado
 Cigna Medical Group
 Connecticut Gastroenterology
 Associates, PC
 Consulting Radiologists, Ltd.
 Coronado Hospital Foundation
 Joseph P. and Amy Cozzolino
 CVS Health Foundation
 Peter Daly
 John DeMarco
 Desert Diamond Casinos &
 Entertainment
 Discount Tire
 Daniel L. Downing
 Matthew Egberg
 Karan Emerick, MD and
 Geoffrey Emerick
 Jeff Englander and Lisa Goldberg
 Raymond and Kathleen Epes
 Alan Epstein, MD
 FedEx Services
 Caitlin Ferriero
 Frederick Fey
 Eric Flanagan
 Jason and Kristen Forrest
 Franciska Bray Inc.
 Fred's Super Dollar
 Louis and Theresa G. Fresolone
 Froedtert Health
 Gallagher & Kennedy
 Shannon Garwich
 John and Kathleen Gates
 GCGA Physicians, Inc.
 Jon and Tina Gehris
 Geico Philanthropic Foundation
 Daniel Gensla
 Robert G. Gish, MD, FAASLD
 GKN Foundation
 Burt I. Harris, Jr.
 Harrison Global, LLC
 F. Blaine Hollinger, MD
 Hospital Pathology Associates PA
 Margaret Meyer Hvatum
 Invesco Mgmt LLC
 Jeremy Jones
 JPMC Foundation
 Jay B. and Kay A. Kaun
 Mark S. and Amy D. Kersey
 Kenneth J. and Jennifer L. Klekamp
 Ann and Ted Kurland
 Latham & Watkins LLP
 Luen H. Lau
 Vladimir Lenchitsky
 Liberty Mutual Foundation
 Joseph Lubertazzi
 Mollie J. Luhman
 Brian MacMahon
 Anthony E. and Kathleen H. Madrid
 Ray Magnussen
 Mar Cor Purification
 Angela T. Marinucci
 Michael L. Martin
 Laurence H. Matlick
 Matrex Exhibits (Astellas)
 Catherine and Emory Mayfield
 McCarter & English, LLP
 McGladrey LLP
 Scott and Susan Meinerz
 Memorial Hermann Health System
 Merck Foundation
 Microsoft Giving Campaign
 Mid-South Transplant
 Foundation, Inc.
 Shari Miller
 Millipore Corporation
 Morgan Stanley Smith Barney, LLC
 Michael H. Nathanson, MD, PhD
 Nelson, Mullins, Riley & Scarborough
 Alison Nesler
 New York Presbyterian Hospital
 New York University School
 of Medicine
 NewYork811, Inc.
 Kathleen Nikolai
 NorthShore University Health System
 Lisa M. Nyberg, MD
 Teresa L. O'Brien and Kim Figueira
 Kenneth O'Connor and
 Deedee Rowe
 Octapharma
 Office of the Indiana
 Attorney General
 Old Lyme Gourmet Company/DBA
 Deep River Snacks
 Gary Olsen
 Leon Pachter
 Rick Paniker
 Ashok Patel
 Pharmacy Care of Tennessee LLC
 Pharmacy Specialty Group
 Premier Home Health Care
 QLC, Inc.
 Rady Children's Hospital
 Drs. Rajeew Puri and Nancy Reau
 Dr. James Rodrigue
 Seymour and Shirley Rubin
 Ryan Specialty Group,
 LLC & Westrope
 Michael Sack
 Ajay K. Sahajpal
 Patrick Sanders
 Sang and Sridhar Digestive
 Disease Consultants, LLC

Louise Sarofeen
Robert V. Sarrío
Stacey B. Schneider
Sharon Schoenherr
Matthew Mason Schulz
Seed Healthcare Consulting, Inc.
Susan Siragusa
Jennifer Sloan
Snell & Wilmer LLP
Solid Products, Inc.
Southern California Research
Center, Inc.
Southwest General Hospital Center
Ellen R. Spring
State Street Foundation, Inc.
Streetwear, Inc.
Susan Sherman Stone
James E. Summar
Martha Supernor
Sutter Bay Hospitals
Sycuan Casino
Symantec Corporation
Tamar Taddei, MD and
Christopher Taddei
Mark J. and Silvia O. Tamsen
Tenet Health
The CM Group
The General Electric Foundation
The University of Kansas Hospital
TLCRx, LLC
Helen E. and John A. Tomich
Tompkins, McGuire, Wachenfeld
& Barry LLP
Toyota-Scion of Bedford
Robert Trovato
UC Health Medical Center
Alex Uhm
United States Fire
Insurance Company
Universal Management
University of California, Los Angeles
University of California, San Francisco
University of Colorado Health
University of Illinois at Chicago
University of Wisconsin Hospitals
& Clinics Authority
Mary Ann Van Clief
Debra Veino
George Jr. and Teresa Velasquez

Verizon Foundation
Rekha and Rejesh Verma
Rodrigo Vianna, MD
Wal-Mart Foundation
Elizabeth and Daniel Weil
William R. and Laurel Welch
Valentine S. Welman[†]
Western Connecticut Health Network
Andrew and Karla Whitman
Dean Will
Quinn and Michelle Williams
Ronda Willis
David Wolckenhauer
Wright Specialty Pharmacy
and Diabetic Supply
Lisa Wyman
Yale University
Yamin & Grant LLC
Min C. Yoo
Roy K. and Maureen Youngberg
Anonymous Donors (18)

\$1,000 - \$2,499

151 Medical Care of the Bronx
A Plus Warehouse Equipment
and Supplies
Ab Initio
George G. Abdelsayed, MD, FACP
About Affi, MD
Laverne B. Ahrens
Ak-Chin Indian Community
Jonathan Albert
Thomas R. Aldred
Alexandria Real Estate Equities, Inc.
Noor Lee Al-Hakim
Allstate
Amalgamated Life & Alicare
American Express Foundation
Amgen Foundation
Brian Anderson
Mark L. Anderson, DVM
Victor Ankoma, MD
Kim Anton
Apothecary By Design, LLC
Jonathan D. Appelbaum
Peter Arceo
Archer Daniels Midland Company
Chantal Monique Arnaud
Arthur Ashley Williams Foundation

Astellas Pharma US, Inc.
Danice K. Atkins
Lia Avanesyan, PhD
AXA Foundation
Axiom Healthcare Pharmacy, Inc.
Mercedes Azcarate
Daniel A. Baik
Lowell A. Baker
Geneva Macasarte Banaag
Martin and Ruth Barber
Scott and Debbie Barkow
Claire Barnard
Barnes and Thornburg LLP
Kate E. Bartleman
Michael Bartman
Kathryn J. Barton
Basin Electric Power Cooperative
Stuart J. Baskin
Janet Beal
John M. Beard, Jr.
David Behnke and Paul Doherty
Erica Beil
Denise Beiswanger
Lynn Beiswanger
Sarah Bellemare
Breanna Benbow
Dean J. Benedetto
Steven Bergeron and Kim R. OSullivan
Kimberly Bertucci
Beton Michael Kaneb Fund
Renee R. Blackowski
Chad Blomgren
John and Paulette Bockert
Henry C. Bodenheimer, Jr., MD
David Bohrman
Nora Michelle Bowman
John J. Boyle
Boyle Family Foundation
Barry T. Brandt
Dennis Braun
Laura and Brian Brege
Brightpoint Health
Lauren Brooks
William Brosius
Robert S. Brown, Jr., MD, MPH
Sylest Brown
Scott Brun
Julie and Lawrence Burgart
Alexandra Burke

[†] deceased

Kristen Busby
Kimberly Bush
Donnie Caldwell
Sheila Calello
Susan Campbell
Candid Group, LLC
Kathy Capelli
Frank Cardile
Donald A. Carignan
Pauline Doris Carignan
Sheri Carman
Marc Carp
Mark H. Carpenter
Susanna Carter
Cas & Associates, Inc.
Theodore Castillo
Peter Catanese, II
Eugene J. Cautillo
Celgene Corporation
Cenovus Energy, Inc.
Ch Show Service IV
Denise Chainey
Estate of Helen A. Chamberjian
Chamberlain College of Nursing
Dr. Sing Chan
Diana B. Chapman
Chevron Employees
Puja Chitkara
Nancy Christal
Paula Chunn
Michelle Clarke
Benjamin Clement
Cleveland Indians Baseball Company
Jessica Clien
Dieter and Paula Clunk
Stanley Martin Cohen, MD
Michael Jourdan Cole
William J. Cole
Barbara and Barry Collier, MD
Gerard Colman
Richard M. and Deirdre Colton
Andree Comeaux
Richard Pugh Conerly†
John Conley
Connecticut State Medical Society
Marc Connell
Cook Systems International, Inc.
Corrigan LTC Partners, Inc.
Corymore Foundation

Michael Coyne
Craig Realty Group-Anthem, LP
Sally L. Cramer
Crest Insurance
Jeffrey S. and Nancy S. Crippin
Renate Crocker
Eric Raymond Cullum
Cushman & Wakefield Inc
Delories K. Damley
Darren Dang
Tamanh Dang
Lynn Davidson
Robert E. Davis, MD
DaVita
James M. and Susan E. Dawson
Edgar Delgado
Andrea Della Pelle
Christopher DeMotto
Mark Dempster
Frank Desroche
Douglas T. Dieterich, MD
Diplomat Pharmacy Inc.
Edward Doherty
Kathleen M. Donnelly
Nancy S. and John L. Donnelly
Concetta A. Donofrio-Hull
Tom J. Dornack
Michael R. Doro
Daid L. Downey
Dennis Doyle
Ashley Drew
Drug Mart
Sarah Drury
Gary L. Dudley
Jeff Dunbar
Frank R. Dzvonik
Eaton Vance Management
Deborah L. Eckerline
Educators Credit Union
EF Institute For Cultural Exchange
James W and Mildred K. Egan
Electronic Vaulting Services, LLC
John Elston
Elizabeth Louise Elting
Deana Elwell
Emerson Charitable Trust
R. F. and R. S. Enderley
Environmental Federation of NC
John Ericson

Julia Fallon
Jennifer Farrell
Mark B. Fast
Mark L. and Lynne N. Feinberg
First Trust Portfolios
Samuel H. Fleet
Foley Family Foundation
Alexander D. Forger
William and Rita Forrester
Lionel S. Foster, MD
Brian P. Frakes
Carlo P. and Kimberly Frappolli
Fraternal Order of Eagles
Paul A. Freedman
Catherine Frenette
Nancy Friedlander
Theresa Fuerbringer
Elise Furman
Thomas Futey
Paul Joseph Gaglio, Sr., MD
Willard Garcia
Bob Gardner
Bruce and Jenny Gasaway
Gaseteria Oil Corporation
Gift of Hope Organ & Tissue
Donor Network
Mike Gindi
Nicholas Ginzburg
Diane Gipson
Kathleen J. and Anthony
Giragosian, Jr.
Angela Gitto
Fred Gonce
Melissa Goodman
Goodwin Procter LLP
Brett and Abby Gordon
Donald J. and Joan Gordon
Margaret Gorman
Sheila C. and Richard Gorman
Ethel L. Gould
Robert H. and Laurel W. Graham
Patricia Grauer
V. Gregory
Charles and Debra Groneman
Julie Anna Grubert
Guido & Christine DiGeronimo
Family Foundation
David T. Hagerty
Ted Hansen

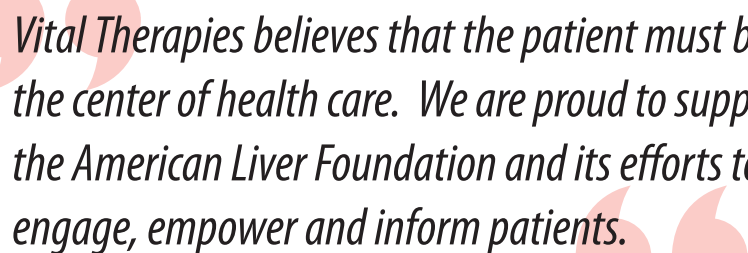
Harlem United
 Allyson E Harper, Esq.
 Marion E. Harrison, MD
 HDK Enterprises
 Julie Heckman
 Maureen Heekin
 Anna Marie Hefner
 Robert Herskovitz
 Winston R. Hewitt, MD
 Mark Hill
 John Carl Hoefs, MD
 Marshall Alan Holt
 Katrina R. Homer
 Bernice V. Horst
 Charles Howald
 HP
 Brian Hunter
 Steven Hyndman
 I.B.E.W Local Union 98
 ILS Aviall Services, Inc.
 Subbarao Inampudi
 Criag Ingber
 Insight North America, Inc.
 Meghan P. Irvine
 Norma and Richard W. Iskenderian
 Ira M. Jacobson, MD
 Ross A. Jaffe
 Robert J. and Susan E. Jamieson
 Jefferson Radiology
 Donald M. Jensen, MD
 Stella S. Jones
 David and Madelyn R. Jordon
 Karyn and David A. Jozokos
 JPMorgan Chase Foundation
 K Watanabe Real Estate Team
 of Realty Executives
 Kaiser Permanente
 Nancy H. Kantor
 Harvey and Bella Kaufman
 John and Graziela Kaufman
 Harish Kedharani
 Patrick Kelly
 Peter Kelly
 Joan L. Barry and Barry J. Kemler, MD
 Veronica Khristov
 Kildub, Inc.
 Cheri A. King
 Shane Daniel Kinnon
 Kevin Kirsch

Donald A. Kirshbaum
 Sharon Klein
 Ralph and Marjorie Koldinger
 Mark E. and Kim E. Konrad
 Jens Kort
 Kraft Foods
 David Kreiss
 William Mark Krueger
 Scott Krug
 Santhosh Kumar
 Jason R. and Jacqueline M. Kurkowski
 Janet Lang
 John M. Lashar
 Jon-Michael Lauderdale
 Scott and Megan Lavinia
 Jennifer Lawrence
 Lear Family Foundation
 Joel Lee
 Kevin Lee
 Lettuce Entertain You Enterprises, Inc.
 Daniel Leung, MD
 Robert Leventhal, MD
 Ed Levin
 John and Gail Lewis
 Robert Lewis
 Ann Marie Liapakis, MD and
 Michael Liapakis
 Lifecare
 Bernice Link
 Ryan Love
 Donald Luneberg
 Kim and Keith Luneburg
 Yan Luo
 Josh and Jessica Lutzker
 Marissa Aranguren Macasarte
 James and Theresa J. Maher
 Kelly Makris
 D. A. Manisundaram, MD, PACS, PLLC
 Jeff Mann
 Sy H. and Ellen Marcus
 Marcus Hotels and Resorts
 Christine Marinaccio
 Patricia Marple
 Paul Martin, MD and Maria T.
 Abreu, MD
 Claudia Martorell
 Steven Marx
 Karen Beth Mashkin, PhD
 Mashkin Family Foundation

Gail Mason
 Karen Matjucha
 Matin S. Mazidi
 Patrick McCarthy
 James McCormack
 Justin A. McCoy
 Rita and Michael McCreery
 William McKearn
 Tim McKiel
 Hal M. Mersel and Emily R. Bullis
 Mesirow Financial
 Ernest Millares
 Peter Miller
 Mirage Eyewear, Inc.
 Missouri Foundation for Health
 Pramod Mistry, MD
 Suzanne Monsour
 Morningside Foundation
 Philip S. Moser
 Jill Mulvihill
 Sammy Nabulsi
 Mia Nease
 Andrea Chau Nguyen
 Linh Nguyen
 LaRhea Nichols
 Radu Niculescu
 Judith L. Nocito
 Thomas Noonan
 Northrop Grumman
 OneBeacon Charitable Trust
 Nadia Ovchinsky
 Daniel L. Paglia
 Elizabeth Palmer
 Panagiotis H. Panagiotakis, MD
 Pareek Inc.
 Philip D. Parrish and Jody Lehman
 Partnership to Fight Chronic Disease
 Lindsay Parton
 Nisha Patel
 Panna Patel
 Patio Pools
 Heather Patton
 Peakvista Technology, LLC
 Edward F. Pergiovanni, DMD, PC and
 Mary L. Pergiovanni, DDS
 Pfizer Foundation
 Niall Phelan
 Philadelphia Insurance Companies
 Susan Pintel

Elizabeth Polizzi
 Patricia A. and David H. Popplewell
 Porter Wright Morris & Arthur LLP
 Potamkin Family Foundation I, Inc.
 Kristin R. and Thomas L. Potter
 Profile Grinding, Inc.
 Prometheus Laboratories, Inc.
 Pro-Tec Athletics
 Vincent J. Puleo
 Quality Specialty Pharmacy Inc.
 Susan Quiring
 Christian Ramera
 Estate of Lois Fulton Ramseur
 Hari Rao
 R. Frederic and Patricia A. Rasch
 Sharon Rayman, RN
 John J. Raymond, MD
 ReCept Companies
 Scott Reding
 S. Reid and Dana Hanford
 Kevin Reinhard
 Rev'd Indoor Cycling, LLC
 Meryl Rewolinski
 Daunielle N. Ricardi
 Cathie and Pat A. Rinaldi
 Sherry Ringwood
 Riverstone Resources, LLC
 Michael Rivett
 Brady Robbins
 Joni Lee Roberge
 Robert Hensley & Associates, LLC
 Caroline Rochon, MD
 Kathaleen Rockers
 Patricia A. Rockers
 Thomas A. Rockoff, MD and
 Rebecca Rockoff
 Greg Rose
 Edna and Samuel Rosenthal
 Shelley A. Rossell
 Richard Rubin†
 F. Robert Salerno
 Samuel Weinstein Family Foundation
 You Sung Sang, MD and
 Jennifer Sang
 Susan D. Sarofim
 Marc Sausa
 Dorene Savage
 SCAN Health Plan
 Don R. and Celia S. Scarbrough
 David and Dorothy Schachne
 John Scott
 SDDR IV LP
 Sellers Publishing, Inc.
 Whitney Seykora
 Sharp and Children's MRI Center, LLC
 Shell Oil Company
 George Shi and Dongjin Pan
 Heather Shulick
 Philip and Judith Shwachman
 Timothy David Sielaff
 SimplicityRx, LLC
 Perry J. Snyderman
 Sonora Quest Laboratories, LLC
 Southern California Transplantation
 Institute Research Foundation
 Southside Pharmacy
 Alfred P. and Janice Spada
 Joy B. and Mark J. Spansel
 Megan Spies
 Randall G. Sprecher
 St. Elizabeth Healthcare
 Carrie Stadtler
 David Stamm
 Jennifer Staples
 Joan Stein
 Kenneth Steines
 Stephanie H. and David A. Spina
 Family Foundation
 Steve Steyer
 Arthur Stolba
 Markus Straessle
 Jeffrey Strauss
 Alexander D. Stuart
 Lillan Stuart
 James F. Sullivan, Jr.
 Tracy D. Sullivan
 Jinyu Sun
 Sun Trading
 Sur Properties, LLC
 Kimberly Sutter
 Syntel
 Cathy Szall
 Caesar A. Tabet and Kathleen Smith
 Jeannie and Owen Tabor, Jr.
 Brenda Tait
 Takeda
 Dennis D. Tan
 Hock Kheng Tan
 Penina Tannenbaum
 Hilton Tapatito
 Tapestry Networks, Inc.
 Team Alyson
 Technical Innovation, LLC
 The Carmax Foundation
 The Cheryl Chase and Stuart Bear
 Family Foundation, Inc.
 The Glastonbury River Runners
 The Haugland Family Foundation
 The Joseph and Shelly Hoesley
 Charitable Fund
 The Kathleen B. and Charles R.
 Walgreen III Foundation
 Leonard A. and Judy Lauder
 The Marcus Corporation
 Foundation, Inc.
 The Prudential Foundation Matching
 Gifts Program
 The Reminger Foundation Company
 The Sandra and Arnold Chase Family
 Foundation, Inc.
 The Wagner Foundation
 The Wilson Sonsini Goodrich & Rosati
 Foundation
 Michael S. Thomas
 Erin Thompson
 Robert A. Toro
 Diana Rose Townsend
 Tradebot Systems, Inc.
 Lester Trilla
 Alan H. Trim
 Trinity Health
 Scott T. Tross
 Denny Tuan
 Robert A. and Kathleen W. Tummillo
 Austin J. Tzou
 UBS Financial Services, Inc.
 UBS Foundation USA Matching
 Gift Program
 UMass Memorial Health Care, Inc.
 UnitedHealth
 University of Kentucky
 Shaun Utter
 Valore Partners
 Dr. and Mrs. Hugo and Susan Vargas
 Stephen C. Vogt, MD
 Mark S. and Elizabeth B. Volk
 Wako Diagnostics
 Clorinda D. Walley
 Wal-Mart
 Thurlow P. Washam

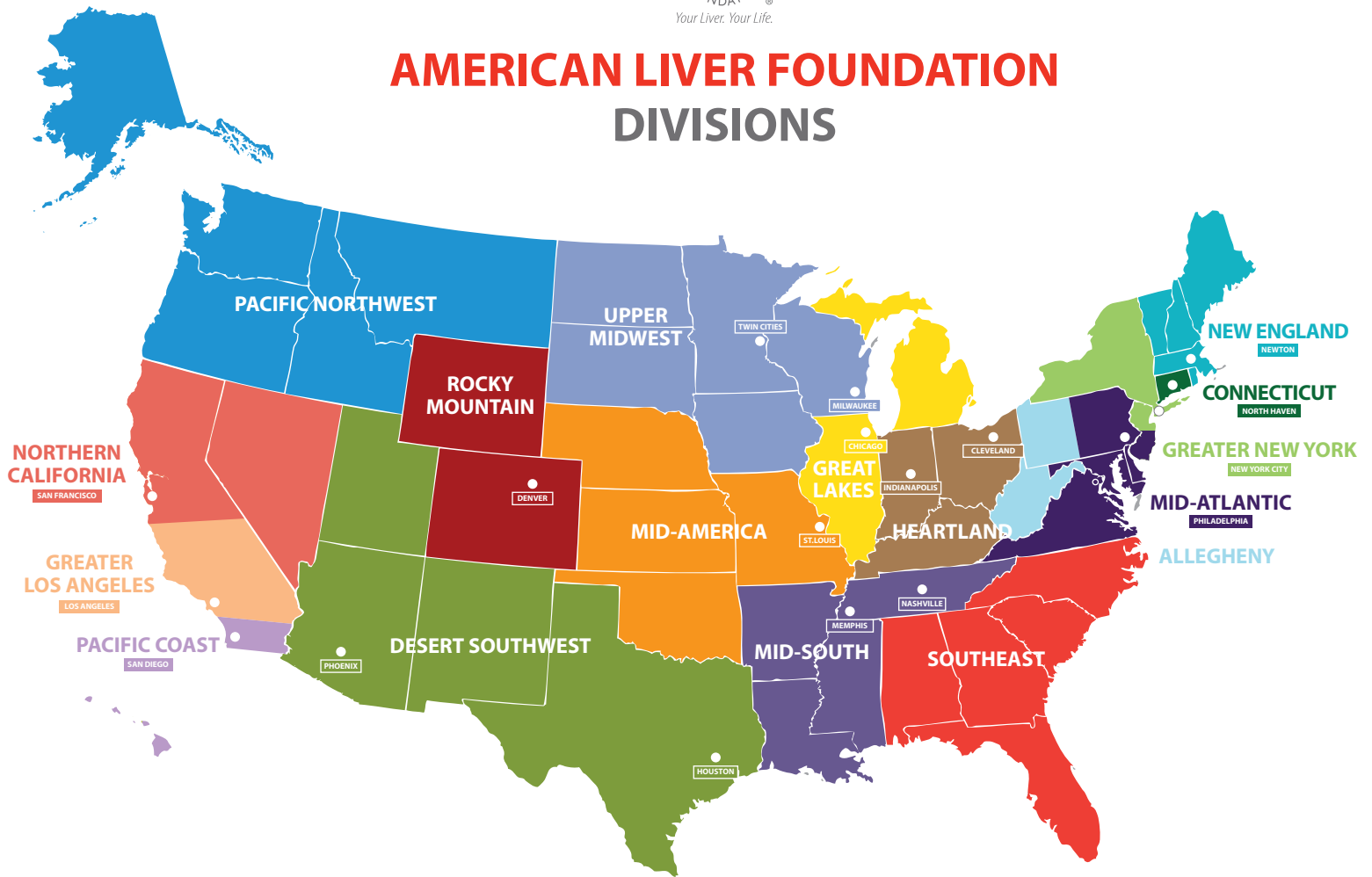
Douglas G. Watson
Herbert D. Weitzman
Wells Fargo Community Support
Campaign
Nancy Weston
Barbara Wierszewski
Virginia Marie Wigle
Wild Child Touring, Inc.
Perkins Will
Jerry Wille
Keith Wimberly
Stewart Winter
Sam and Andrea Woolford
Jenna Wozniak
Nana Wrafe
Masaru and Taro Yamaguchi
Blake Yoshida
Patricia Yuse
Richard R. Yuse
Debra Ziegler
Stephen D. Zucker, MD
Anonymous Donors (50)



Vital Therapies believes that the patient must be at the center of health care. We are proud to support the American Liver Foundation and its efforts to engage, empower and inform patients.

Terry Winters, Ph.D.,
Vital Therapies Co-Chairman and Chief Executive Officer

AMERICAN LIVER FOUNDATION DIVISIONS



- | | | |
|---|--|---|
| ● Allegheny
(Western PA, WV) | ● Heartland
(IN, KY, OH) | ● Pacific Coast
(San Diego, CA & HI) |
| ● Connecticut
(CT) | ● Mid-America
(MO, KS, NE, OK) | ● Pacific Northwest
(WA, ID, MT, OR, AK) |
| ● Desert Southwest
(AZ, NM, TX, UT) | ● Mid-Atlantic
(Eastern/Central PA, DE, DC, MD
Southern and Central NJ and VA) | ● Rocky Mountain
(CO, WY) |
| ● Great Lakes
(IL, MI) | ● Mid-South
(TN, MS, AR, LA) | ● Southeast
(NC, SC, GA, AL, FL) |
| ● Greater Los Angeles
(Los Angeles, Orange County) | ● New England
(MA, ME, NH, RI, VT) | ● Upper Midwest
(MN, WI, ND, SD, IA) |
| ● Greater New York
(NY, Northern NJ) | ● Northern California
(San Francisco, NV) | |

Visit our website at LiverFoundation.org to connect with the ALF Division near you.

2015 Division Highlights

All year long, across the country, ALF's local divisions are active in their region to raise awareness, provide support and education to people living with liver disease and their families, and to fund the mission so we can continue and expand this work. Following are highlights of their many accomplishments this year.

January. Volunteers from ALF's **Greater Los Angeles** and **Northern California Divisions** joined other West Coast residents in San Francisco for a two-day training to become members of our National Patient Advisory Committee.

February. The **Great Lakes Division** held its 12th annual Academic Debates, a CME accredited educational program for the medical community of the Great Lakes region. The purpose of this program is to address controversial issues pertaining to liver disease treatment, current and best practices, and new research in hepatology. The Academic Debates are attended annually by more than 150 medical professionals.

March. The **New England Division** partnered with the Wachusett Area Rotary Club to raise awareness about the high rates of hepatitis C (HCV) among Baby Boomers, making presentations to members at local Rotary Clubs about the impact of the disease and the importance of getting tested.

April. The **Mid-South Division** held its annual Spring liver symposium, focused on exploring community approaches to the detection and treatment of viral hepatitis. A Fall symposium provided updates on nonalcoholic fatty liver disease (NAFLD) and nonalcoholic steatohepatitis (NASH).

The **Greater New York Division** held its first Liver Rebirthday of the year on Long Island to bring together those who have had a liver transplant and their families to celebrate the gift of life and to learn more about liver transplantation from leading specialists.

May. May is National Hepatitis Awareness Month and ALF took action across the nation. Our **Desert Southwest Division** partnered with local organizations to coordinate HCV testing days in **Houston** and **Phoenix**. ALF divisions also coordinated similar events in **Philadelphia**, **New York** and **New England**. Also this month, our **Mid-Atlantic Division** focused on autoimmune hepatitis (AIH) and teamed up with Einstein Hospital to offer educational programming to those living with AIH.

June. The **New England Division** held its monthly educational series for patients, collaborating with Lahey Hospital and Medical Center to offer a program that focused on transplantation and living donor transplants.

July. ALF held its first Flavors of Miami event, bringing together some of Miami's top chefs, business leaders, individuals living with liver disease and health care professionals to raise money and awareness for research and patient services.

August. The **Mid America Division** continued its viral hepatitis education program with the Jefferson County Health Department, producing one of its four annual testing events.

September. The **Heartland Division** hosted its tenth annual Liver Matters conference, attracting nearly 100 medical professionals from Ohio for nine educational sessions on liver cancer and the future perspectives in hepatocellular carcinoma (HCC) management.

The **Pacific Coast Division** hosted an educational conference for patients, providers and caregivers.

October. ALF's **Northern California Division** hosted a Liver Cancer Lecture Program for patients and their families with Dr. Jennifer Guy, MD – the Medical Director of the Liver Cancer Program at California Pacific Medical Center (CPMC).

The **Connecticut Division** helped launch a new "Passport Program" on organ donation awareness using a health fair format with volunteers from the Yale New Haven Hospital transplant program, organ procurement organizations, Donate Life Connecticut and ALF staffing exhibit tables to provide information.

November. Our **Great Lakes Division** partnered with the Veterans Administration (VA) to hold a HCV testing and education day for a high-risk veteran population.

December. ALF's **Upper Midwest Division**, which offers educational programs for medical professionals throughout the year, brought together 100 local professionals for a post AASLD Liver Meeting program to learn about key findings that had been presented at the national conference.

Rocky Mountain Division Board Member, Carleen McGuffy, and her family continued to raise awareness about liver disease. Throughout 2015, her husband and son climbed mountains throughout Colorado and outside the state. They brought a banner up to the top of each mountain, which garnered successful television and newspaper coverage, and inspired us all to do even more in 2016.





Your Liver. Your Life.

39 Broadway, Suite 2700
New York, NY 10006
(212) 668-1000

National Helpline
1-800-GO-LIVER
(1-800-465-4837)

LiverFoundation.org
HepC123.org
HE123.org

 /Liverinfo
 /LiverUSA
 /AmericanLiver

The American Liver Foundation is a 501(c)3 nonprofit organization.